

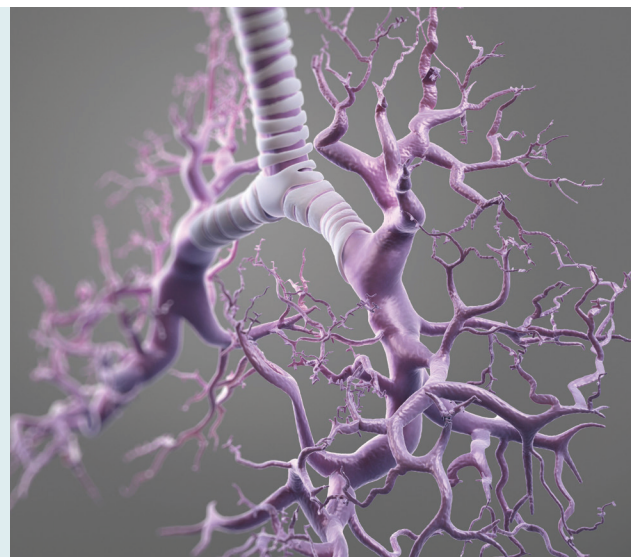
UTILIZING CURRENT AND EMERGING THERAPY TO TREAT THE ADVANCED COPD PATIENT

Specialists from the Temple Lung Center will discuss the presentation, work-up, and management of COPD patients. Specific discussions on the role of the eosinophil in COPD exacerbations and advanced treatment with lung volume reduction and transplantation for patients with severe emphysematous COPD will take place. Registrants may submit cases illustrating these clinical problems to be considered for presentation and discussion during the program.

2 AMA PRA Category 1 Credit(s)[™] offered

Monday, April 30, 2018

Davio's Northern Italian Steakhouse
King of Prussia Town Center
200 Main Street, King of Prussia, PA 19406



Course Director: Gerard J Criner, MD
Nathaniel Marchetti, DO

Agenda: 6:30 PM Welcome and Registration
7:00 PM Presentations and Q/A
8:30 PM Discussion of submitted cases
9:00 PM Adjournment

Speakers and Topics:

THE RATIONALE OF LABA/LAMA VS. LABA/ICS

Nathaniel Marchetti, DO

Professor, Medicine, Lewis Katz School of Medicine at Temple University
Medical Director, Respiratory Intensive Care Unit,
Temple University Hospital

THE EMERGING ROLE OF THE EOSINOPHIL IN EXACERBATIONS OF COPD

Gerard J Criner, MD

Chair and Professor, Thoracic Medicine and Surgery,
Lewis Katz School of Medicine at Temple University
Director, Temple Lung Center

RSVP to Marcia Fleming

Key Account Manager, Temple Lung Center

T: 267-804-5621 **E:** Marcia.Fleming@tuhs.temple.edu

LUNG VOLUME REDUCTION IN THE COPD PATIENT

Gerard J Criner, MD

Chair and Professor, Thoracic Medicine and Surgery,
Lewis Katz School of Medicine at Temple University
Director, Temple Lung Center

TIMING OF REFERRAL FOR LUNG TRANSPLANTATION IN COPD

Nathaniel Marchetti, DO

Professor, Medicine, Lewis Katz School of Medicine at Temple University
Medical Director, Respiratory Intensive Care Unit,
Temple University Hospital

Online registration also available at:
medicine.temple.edu/cme

To submit a case to be considered for discussion, please email susan.estrella@tuhs.temple.edu by Monday, April 23.

*Supported by an educational grant by Boehringer Ingelheim pharmaceuticals (pending)

Intended Audience: Pulmonologists, Cardiologists, PCPs, PAs, NPs, Respiratory Therapists

Accreditation Statement: Lewis Katz School of Medicine at Temple University is accredited by the Accreditation Council for Continuing Medical Education (ACCME) to provide continuing medical education for physicians.

Certification Statement: Lewis Katz School of Medicine at Temple University designates this live activity for a maximum of 2 AMA PRA Category 1 Credit(s)[™]. Physicians should claim only the credit commensurate with the extent of their participation in the activity.

Disclosure Policy: It is the policy of the Lewis Katz School of Medicine at Temple University, The Albert J. Finestone, MD, Office of Continuing Medical Education that the speaker and provider disclose real or apparent conflicts of interest relating to the topics of this educational activity, and also disclose discussions of unlabeled/unapproved uses of drugs or devices during their presentation(s). The Accreditation Council for Continuing Medical Education (ACCME) considers financial relationships to create actual conflicts of interest in CME when individuals have both a financial relationship with a commercial interest and the opportunity to affect the content of CME about the products or services of that commercial interest. The ACCME defines a commercial interest as "any entity producing, marketing, re-selling, or distributing health care goods or services consumed by, or used on, patients." The ACCME does not consider providers of clinical service directly to patients to be commercial interests. The Lewis Katz School of Medicine at Temple University has established policies in place that will identify and resolve all conflicts of interest prior to this educational activity. Detailed disclosure will be made prior to the activity.

If you have special needs that we can address to make your participation more meaningful and enjoyable, please contact our office at (215) 707-4787.

Temple Health refers to the health, education and research activities carried out by the affiliates of Temple University Health System (TUHS) and by the Lewis Katz School of Medicine at Temple University. TUHS neither provides nor controls the provision of health care. All health care is provided by its member organizations or independent health care providers affiliated with TUHS member organizations. Each TUHS member organization is owned and operated pursuant to its governing documents.

Non-discrimination notice:

Temple University Hospital does not exclude participation in, and no one is denied the benefits of, the delivery of quality medical care on the basis of race, religious creed, sex, sexual orientation, gender identity, disability, age, ancestry, color, national origin, physical ability, or source of payment.

TEMPLE HEALTH Lung Center